



D DRUTEX

ENGINEERED FOR YOU

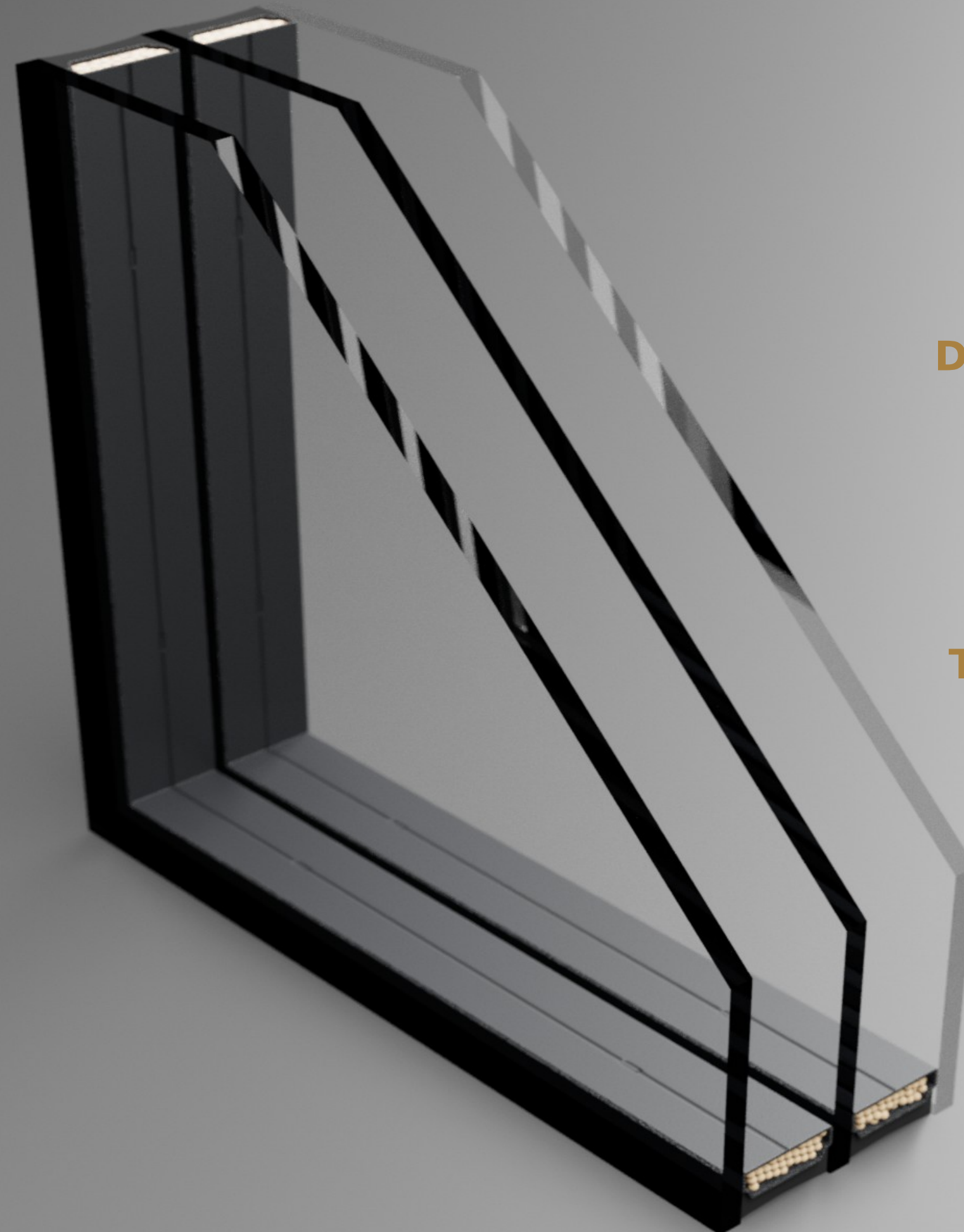
Bytów, 15 may 2024



NEW
IGLO EDGE

NEW

IGLO EDGE



IN STANDARD

DOUBLE-CHAMBER GLAZING PACKAGE
 $U_g = 0,5 \text{ W(m}^2\text{K)}$

OPTIONAL

TRIPLE-CHAMBER GLAZING PACKAGE
 $U_g = 0,4 \text{ W(m}^2\text{K)}$

NEW
IGLO EDGE



WARM EDGE
SWISSPACER ULTIMATE

NEW

IGLO EDGE



4 CATCHES
ANTI-BULGLARY

NEW

IGLO EDGE

ALUMINIUM WINDOW HANDLE
DUBLIN

NEW
IGLO EDGE



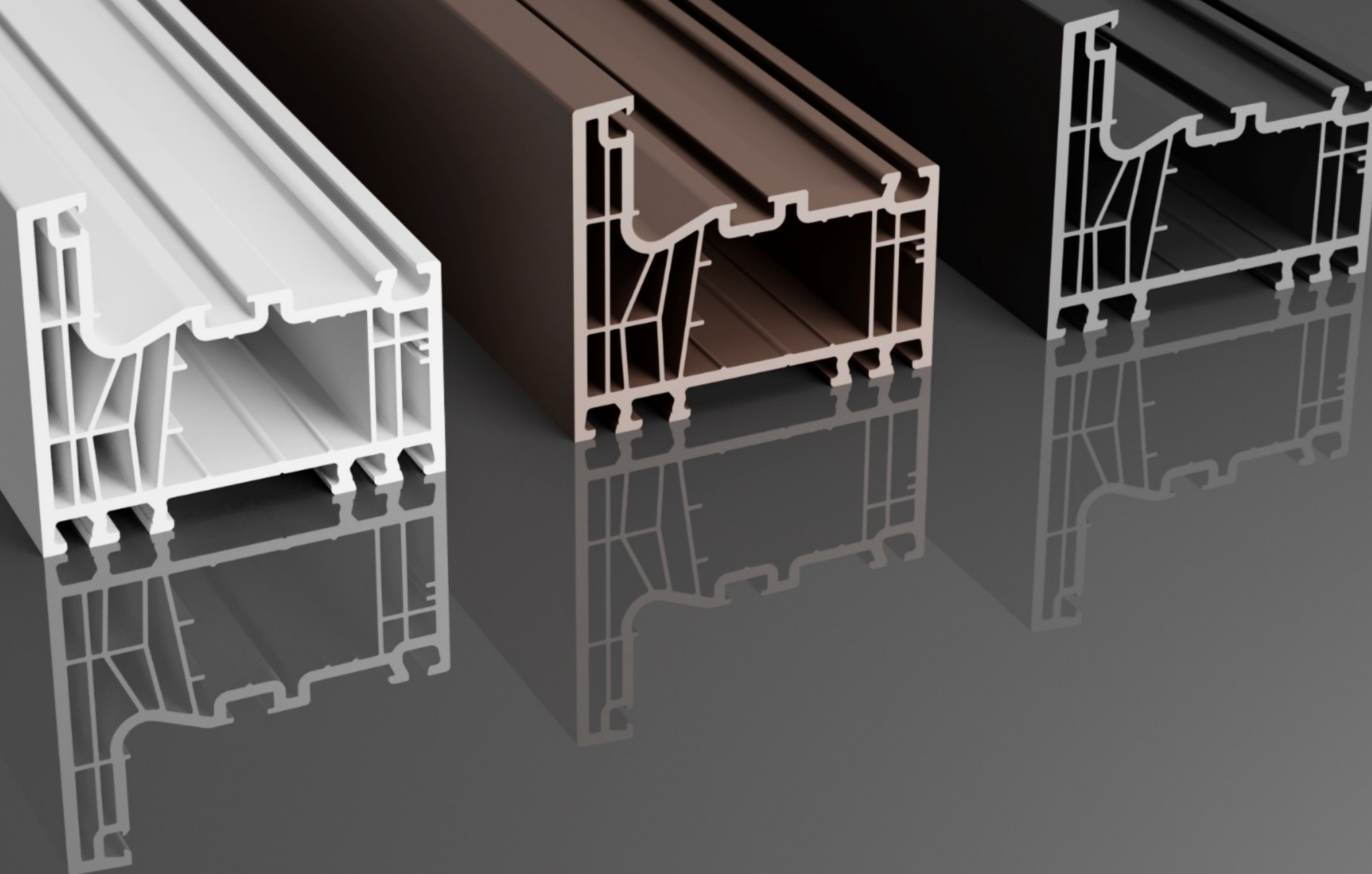
WELD
V-PERFECT

NEW

IGLO EDGE

3 CORE COLORS TO CHOOSE FROM:

- WHITE
- BROWN
- ANTHRACITE

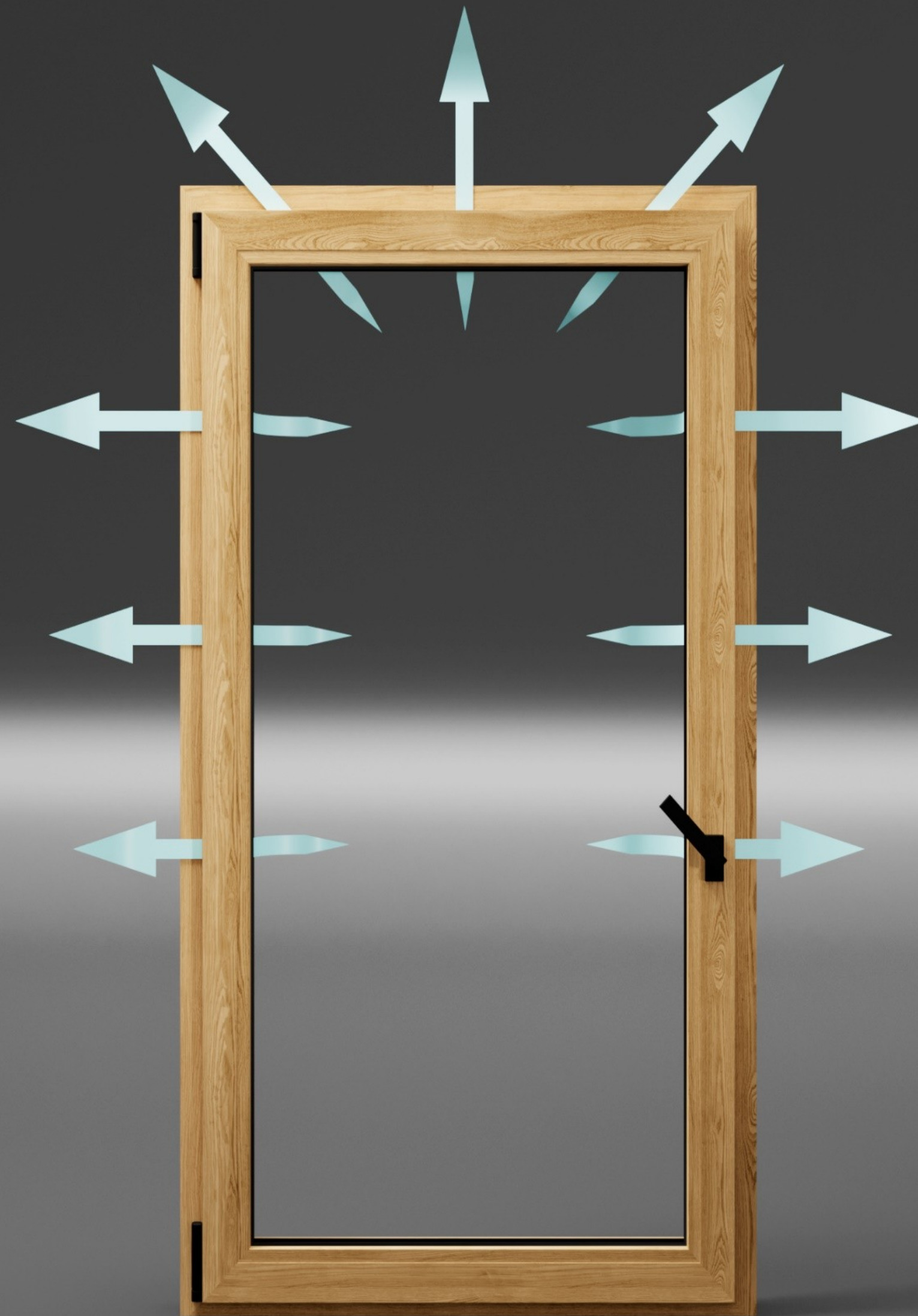


NEW
IGLO EDGE



5-CHAMBER SILL PROFILE
WITH GASKET

NEW
IGLO EDGE



MICROVENTILATION
+
**HANDLE MISPLACEMENT
LOCKING MECHANISM**

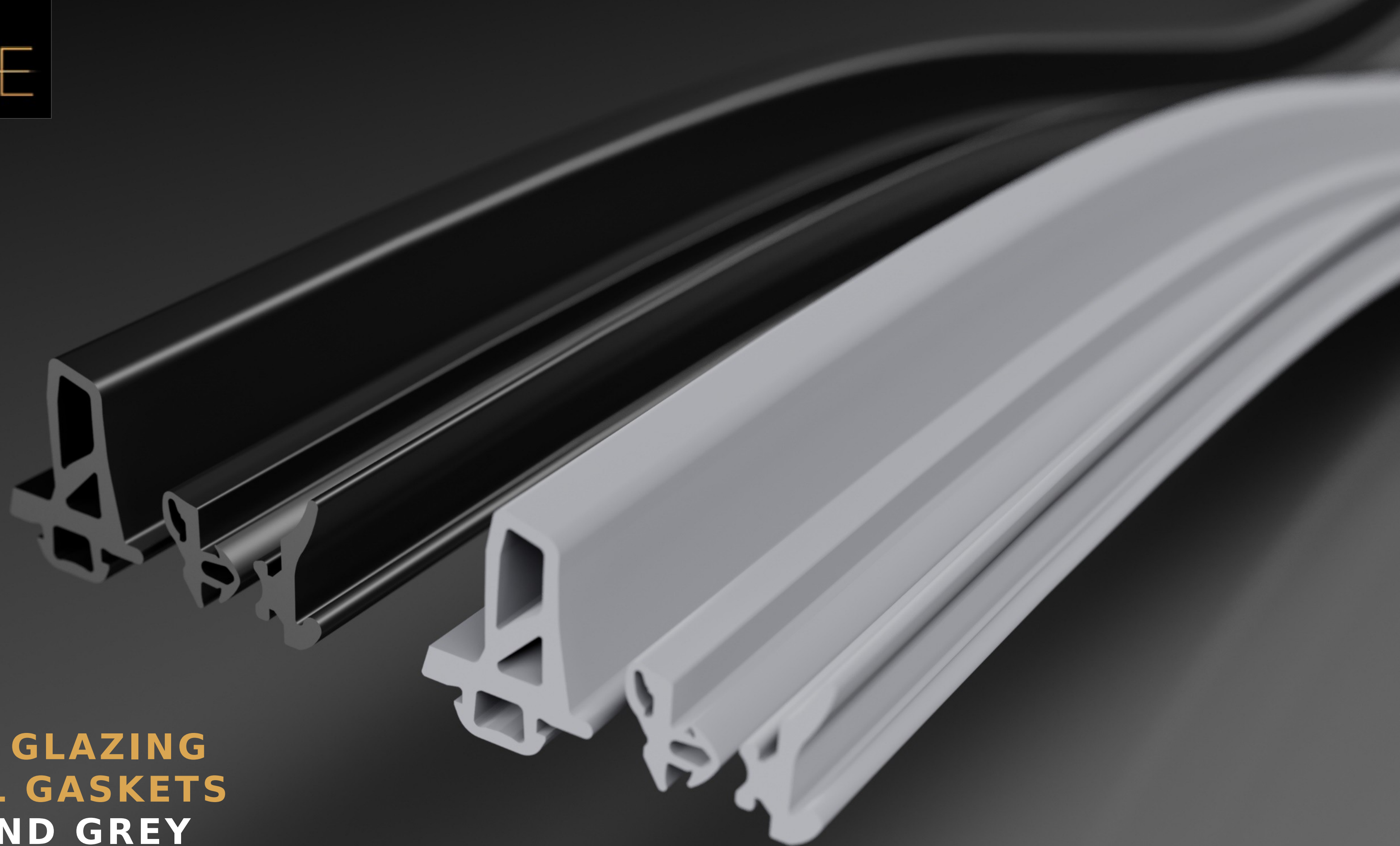
NEW
IGLO EDGE

FILLING OF THE LOWER
HARDWARE GROOVE

A detailed 3D cutaway diagram of a window frame assembly. The frame is dark grey with a complex, multi-chambered internal structure. A light-colored wooden sash is visible on the right side. A prominent feature is a large, rectangular groove in the lower part of the frame, which is filled with a bright red material. This red material is shown in a cross-section, revealing its solid, uniform texture. The lighting is dramatic, highlighting the various surfaces and the texture of the wood and the red filler.

NEW

IGLO EDGE



**PERIMETER, GLAZING
AND CENTRAL GASKETS
IN BLACK AND GREY**

FEATURE/SYSTEM	IGLO EDGE	IGLO ENERGY CLASSIC
U_w WITH A DOUBLE-GLAZED PACKAGE U_g = 0.5 W/(m² K) , (48 mm package)	U_w = 0,73 W(m²K) for a ref. 1230x1480 mm window with a warm edge Swisspacer Ultimate	U_w = 0,81 W(m²K) for a ref. 1230x1480 mm window with a warm edge Swisspacer Ultimate
U_w WITH A TRIPLE-GLAZED PACKAGE U_g = 0.4 W/(m² K) , (58 mm package)	U_w = 0,66 W(m²K) for a ref. 1230x1480 mm window with a warm edge Swisspacer Ultimate	not available
PROFILE CLASS	A	A
CORE COLOUR	white, brown, anthracite	white, brown, anthracite
NUMBER OF CHAMBERS	7	7
NUMBER OF EPDM GASKETS	3 (incl. central) in black or grey	3 (incl. central) in black or grey
FRAME INSTALLATION DEPTH	82 mm	82 mm
SASH INSTALLATION DEPTH	86 mm	82 mm
STEEL REINFORCEMENT IN THE FRAME	closed, 2 mm	closed, 2 mm
STEEL REINFORCEMENT IN THE SASH	semi-open, profiled, 2 mm	U-shaped, 2 mm
STANDARD DEPTH OF THE GLAZING PACKAGE FOR THE FRAME	50 mm (54 mm max) U _g = 0,5 W(m ² K)	48 mm U _g = 0,5 W(m ² K)
STANDARD DEPTH OF THE GLAZING PACKAGE FOR THE SASH	48 mm U _g = 0,5 W(m ² K) max 58 mm U _g = 0,4 W(m ² K)	48-52 mm U _g = 0,5 W(m ² K)

FEATURE/SYSTEM	IGLO EDGE	IGLO ENERGY CLASSIC
GLASS PANE SPACER INCLUDED	Swisspacer Ultimate (no option of using a galvanized steel glass-pane spacer)	galvanised steel glass-pane spacer
MACO MULTI-MATIC KS FITTINGS INCLUDED	4 anti-burglary catches (where technologically possible)	2 anti-burglary catches
HANDLE MISPLACEMENT BLOCKAGE	yes	yes
STANDARD HANDLE	DUBLIN (rectangular)	IE
UNDER-SILL TRIM	54123	54123
STANDARD WELD	V-Perfect (standard weld available as an option)	V-Perfect (standard weld available as an option)
FILLING OF THE FITTINGS GROOVE	yes	yes
COLOURS	Full range of available veneers	Full range of available veneers
WARRANTY COVERAGE	Same for both systems	

SAME OPTIONS AVAILABLE FOR BOTH SYSTEMS

- option of using glass panes with increased sound insulation, laminated glass, (safety and anti-burglary), ornamental glass, solar control glass, mirrored glass and sandblasted glass
- option of using MACO Multi-Power concealed hinges in the fittings notch (invisible when the window is closed) as well as COMFORT and TBT fittings
- wide range of decorative foil colours, possibility to cover the window on both sides (two identical or different colours) or only on one side
- handles for postless windows
- option of using aluminium internal muntin bars with widths of 8 mm, 18 mm, 26 mm or 45 mm.
- wide range of additional profiles (connectors, extensions, sill profiles)
- hinge covers in custom colours: titanium, champagne, cream, black and gold
- option of selecting a profile core in anthracite or brown
- available with roller blinds, venetian blinds and insect screens
- option of using a ventilator
- turn thumb lock
- option of providing Smart Home automation

NEW

IGLO EDGE

ALU-DESIGN

- thanks to its angular shape, the system is visually similar to aluminium window systems,

INTERNAL CORE COVERING

- modern overlapping of the glazing in the sash, making the profile colour (core) is completely invisible at the Edge,

EASY TO INSTALL

- thanks to the specially designed and profiled reinforcement, the system has achieved a high degree of rigidity, enabling faster and easier installation (significantly reducing the time required to adjust the sash) and much more. This is a real time-saver and easy installation,

NEW CENTRAL SEALING

- A proprietary model of the central gasket, which seals perfectly and is firmly seated in a "fitting groove", which prevents it from falling out,

MORE NATURAL LIGHT

- the frame and sash assembly is only 114 mm (124 mm for Iglo Energy), allowing more natural light to enter the room.



NEW
IGLO EDGE

SEALING MASTER

- a double seal was designed under the glass in the sash, which improves **UW parameters**

